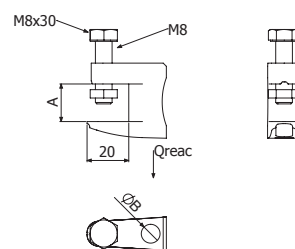


GRAPA VIGA A VR

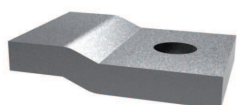


DESCRIPCIÓN	A mm	øB mm	Q _{reac} kg	CINCADO	
				REF.	kg/ud
GRAPA VIGA A VR8	18	9	120	2/6816	0,08
GRAPA VIGA A VR10	20	11	250	2/7072	0,15

La Grapa VR8 permite el uso de varilla 5/16" y la Grapa VR10 permite el uso de varilla 3/8".

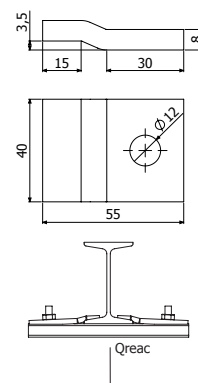
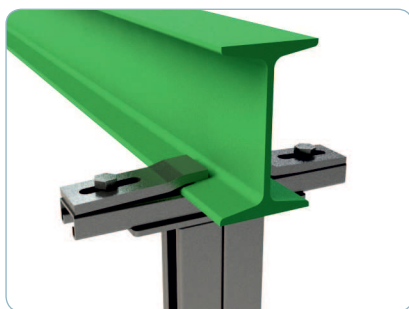


BRIDA VIGA A PERFIL



DESCRIPCIÓN	Q _{reac} kg	GC	
		REF.	kg/ud
BRIDA VIGA A PERFIL	1000	2/5624	0,17

Adecuada para tornillo M10 o de 3/8".



CINTA DE SUJECIÓN



DESCRIPCIÓN	ALU		I304	
	REF.	kg/m	REF.	kg/m
CINTA DE SUJECIÓN	2/3461	0,04	2/3462	0,10

